

HREDN9



# HOISTING & RIGGING

*SUPERLIFT is the number one rigging product brand in Australia. Whether working deep in an underground mine, an oil platform, or in defense and construction industries, there's a product to suit every job. And all combine SUPERLIFT's legendary reliability and strength with world-leading manufacturing technology. SUPERLIFT Hoist products make heavy work easy.*



## About Us

From its establishment in 1988 SuperLift has built a solid reputation for high quality safe, strong reliable lifting equipment. We have rapidly become the world's largest and leading manufacturer of Australian made industrial lifting and rigging equipment. The satisfaction of our customers is our number one concern... and it's their number one concern as well. That's why they keep coming back to SuperLift. They won't accept anything but the best and you shouldn't either.

Our customers know... SuperLift provides superior products at competitive prices. Call today for the quality, reliability, competitive pricing, and full service you deserve.

Our manufacturing facility incorporates the latest in robotic manufacturing technology, computer aided design and manufacturing processes. With the latest in technology we would have the most advanced facility in Australia for the manufacture of industrial lifting equipment. Looking ahead, SuperLift's focus is clearly aimed at better serving the total needs of our customers. Further investment in manufacturing technology and equipment will expand our product offering, providing more solutions to our customers' lifting needs.

SuperLift's commitment is to continue to research and develop/manufacture high quality safe, strong reliable lifting equipment to meet the current and future needs of our customers. Meeting the demands of the increasingly complex, quality-conscious industrial world market is a challenge we gladly accept.

This Data book has been produced to assist the salesperson, engineer, draftsman, or rigger in selecting correct equipment for their particular use. Do not hesitate to contact Superlift's technical advice department if you require any further information.



## Our Facility

Our manufacturing facility incorporates the latest in robotic manufacturing technology, computer aided design and manufacturing processes. Product testing utilizing our vertical and horizontal testing machine. With the latest in technology we would have the most advanced facility in Australia for the manufacture of industrial lifting equipment.

Looking ahead, SuperLift's focus is clearly aimed at better serving the total needs of our customers. Further investment in manufacturing technology and equipment will expand our product offering, providing more solutions to our customers' lifting needs.

## Contents

| Description                                    | Page |
|--|------|
| Lifting Device General Precautions             | 4    |
| Lifting Device Maintenance Information         | 5    |
| Girder Trolleys - Motorized                    | 6    |
| Girder Trolleys – Push, Geared                 | 7    |
| Track Wheel Assemblies                         | 8    |
| Overhaul Balls                                 | 8    |
| Swivel Alloy Hooks AS 2318                     | 9    |
| Duplex (Rams Horn) Swivel Hooks AS 2318        | 10   |
| Alloy Shank Hooks                              | 10   |
| Swivel Eyes AS 2318                            | 11   |
| Heavy Duty Safety Latch Kits                   | 11   |
| Alloy Shank Hooks DIN 15401 DIN 15402          | 12   |
| Alloy Single Point Shank Hooks DIN 15401       | 13   |
| Alloy Duplex (Rams Horn) Shank Hooks DIN 15402 | 13   |
| Load Brake Hand Winches AS1418                 | 14   |
| Custom Products - Gallery                      | 15   |
| Quotation Template – Custom Product            | 16   |
| Quotation Template – Custom Sheaves            | 17   |
| Quotation Template – Custom Sheave Blocks      | 18   |
| Quotation Template – Custom Crane Blocks       | 19   |
| Quotation Template – Custom Machined Hooks     | 20   |
| Quotation Template – Custom safety Latch kits  | 21   |
| Testing And Inspection                         | 22   |
| Terms & Conditions of Sale                     | 23   |
| Conversion Tables                              | 24   |





# WARNING

## LIFTING DEVICE - GENERAL PRECAUTIONS

LOAD RATINGS STATED ON ALL **SUPERLIFT** LIFTING DEVICES ARE APPLICABLE TO NEW OR AS NEW PRODUCTS ONLY AND APPLY TO THE MAXIMUM LOAD WHICH MAY BE SUPPORTED BY THE HEAD FITTING, UNDER NORMAL ENVIRONMENTAL CONDITIONS. SHOCK LOADINGS MUST BE TAKEN INTO ACCOUNT WHEN SELECTING LOAD RATINGS ON LIFTING DEVICES AS THESE LOADS ARE MUCH GREATER THAN STATIC LOADS. THE WORKING LOAD LIMIT (W.L.L.) OR SAFETY FACTOR ON ALL **SUPERLIFT** PRODUCTS MAY BE AFFECTED BY WEAR, MISUSE, OVERLOADING, DEFORMATION, CORROSION OR OTHER CONDITIONS, REGULAR INSPECTION MUST BE CARRIED OUT TO DETERMINE WHETHER USE CAN BE CONTINUED OR THE PRODUCT WITHDRAWN FROM SERVICE, **SUPERLIFT** LIFTING DEVICES SHOULD BE USED BY EXPERIENCED TRAINED PERSONNEL FAMILIAR WITH HOISTING SYSTEMS.

All the products manufactured by **SUPERLIFT** are sold with the express understanding that the purchaser is thoroughly familiar with the safe and proper use and application of the product.

Responsibility for the use and application of the products rests with the user.

**SUPERLIFT** products are generally intended for tension or pull loads, side loading must never be applied, as it exerts additional force or loading which the product is not designed to accommodate.

Failure of the product can occur due to incorrect use, misapplication, abuse, or improper maintenance. Product failure could result in property damage, personal injury or death.

- **WORKING LOAD LIMIT** - The maximum load or force the product is authorized to support in a particular service.
- **PROOF LOAD** - The average force to which a product may be subjected to before deformation occurs.
- **SHOCK LOAD** - A force that results from the rapid acceleration of a static load e.g.; jerking, these loads add significantly to the static load.
- **STATIC LOAD** - A constantly applied force or load.
  
- **IMPROPER:** Use of lifting devices could result in death or serious injury to avoid this -
- **NEVER:** Exceed working load limit
- **NEVER:** Hoist loads over or near people
- **NEVER:** Work under or near hoisted loads
- **ALWAYS:** Operate, inspect and maintain lifting equipment in accordance with all relevant safety standards.



### **WHEN ATTACHING OR MOVING A LOAD, THE OPERATOR / RIGGER, MUST MAKE SURE OF ALL OF THE FOLLOWING:**

- The hoisting rope is free of kinks or twists and not wrapped around the load.
- The load is attached to the Crane Hook by means of a sling or other approved device allowing for single or duplex (double ram horn) hooks.
- The sling and load will clear all obstacles or obstructions.
- The load is balanced and secured before lifting the load more than a few inches.
- Multiple lines are not twisted around each other.
- The hook is brought over the load in a manner to prevent swinging.
- There is no sudden acceleration or deceleration of the moving load.
- Do not allow anyone to ride on a load or hooks.
- Do not attempt lifts beyond the rated load capacity of a crane or slings.
- Do not lift a load from the side. Centre the crane directly over the load before hoisting to avoid swinging the load.
- Do not leave suspended loads unattended.

Spare parts are available from **SUPERLIFT** & authorized resellers; replace all worn or damaged parts.  
**USE ONLY GENUINE SUPERLIFT SPARE PARTS WHEN REPAIRING OR SERVICING SUPERLIFT PRODUCTS**



## LIFTING DEVICE - MAINTENANCE INFORMATION.

**SAFETY OF PERSONNEL** - The regulatory authority may require that it be notified where a lifting device or winch is used for personnel lifting.

**STORAGE** - Lifting devices, hand winches and ropes should be periodically overhauled and, when not in use, carefully stored in a satisfactory environment.

**USE** - Prior to use, lifting devices or hand winches should be thoroughly examined to determine whether they are safe to use, for their intended application, they should only be used in a manner in which they are designed for.

Lifting devices and hand winches must be regularly inspected, lubricated and maintained for peak efficiency and extended usefulness, the frequency of inspection depends upon frequency and period of product use, as well as environmental conditions, which are contingent upon the user's good judgement.

### **SPECIAL ATTENTION SHOULD BE GIVEN TO FOLLOWING PRECAUTIONS PRIOR TO USE**

- a) **Hook**, Check for damage, cracks, nicks, gouges, deformations of the throat opening, wear on saddle or load bearing point, and twist.
- b) **Safety Latch**, Examine the safety latch for correct operation, deformation, broken springs etc
- c) **Swivel Head Fitting**, Examine the nut or collar of the shank to ensure that it is securely fastened and free from visible defects, check that the shank is not distorted and turns freely by hand, and that the clearance is not excessive. Grease or oil the shank and the bearing surface of the nut or collar, if thrust bearings are fitted these must also be greased or oiled periodically depending on the severity of use.
- d) **Product Frame**, Examine for fractures, stretching, buckling, distortion and wastage due to corrosion. Buckled or a distorted frame indicates that the product has been overloaded or used incorrectly, the product should not be used in this condition.
- e) **Fasteners**, Examine the security of nut's bolts and other locking methods, especially after reassembly following a tear down inspection, mounting bolts & nuts must be property class 8.8 or better.
- f) **Axles**, Examine axles for wear, and check that they are retained as intended.
- g) **Brake Assembly**, Examine the winding nut to ensure that it is securely fastened and free from excessive wear, check that the pinion shaft is not distorted and turns freely by hand, and that the clearance with the winding nut is not excessive. Following a tear down inspection, lubricate thread surface of the winding nut sparingly taking care not to get lubricant on the brake discs. Ratchet, pawl brake discs and pawl spring must be checked for wear and replaced if necessary depending on the severity of use.
- h) **Secondary Brake**, (where fitted) Examine the secondary brake for correct operation, deformation, broken springs etc
- i) **Rope Drum**, Examine the rope drum for excessive wear and surface defects (e.g. bruising, chipping cracking etc) that may damage the rope during use. The drum should be examined to see that it turns freely and that there is not excessive wear on the gears or bearings.
- j) **Rope**, Examine the fit of the rope in the rope fixing of the drum to ensure that it is installed correctly and that it is fitted in accordance with the rotation label on the drum.
- k) **Bearings & Bushes**, (where fitted) make sure product rotates freely without any signs of binding.
- l) **Lubrication**, Where provision is made for lubrication, ensure that the winch is adequately lubricated. If the winch is not lubricated regularly, its life is greatly reduced, and the efficiency of the tackle is impaired.
- m) **Painting**, Do not paint the lifting device or winch in such a manner that free movement is impaired or lubrication points or grease nipples become clogged. It is specially important that load or reference markings are not obliterated
- n) **Heating**, After any exposure of a winch to temperatures exceeding 200 degrees Celsius (such as from a furnace, welding etc) that may affect its serviceability, the winch should be returned to SuperLift for evaluation..
- o) **Temperature Limits**, Permissible ambient conditions for SUPERLIFT products are - 40 degrees Celsius to + 60 degrees Celsius & 100 % humidity.
- p) **Wear Limits**, Maximum permissible wear at load bearing points on SUPERLIFT products is 10 %
- q) **Replacement Parts**, Use only genuine SUPERLIFT replacement parts.

Spare parts are available from **SUPERLIFT** & authorized resellers; replace all worn or damaged parts.  
**USE ONLY GENUINE SUPERLIFT SPARE PARTS WHEN REPAIRING OR SERVICING SUPERLIFT PRODUCTS**

## Girder Trolleys (AS1418)

SuperLift engineering manufactures a wide range of girder trolleys for the transportation of materials or equipment along universal beams or R.S.J's. These range in capacity from 250 Kg to 30,000 Kg and are of the push, geared, motorized or swivel articulated type to suit all beam sizes.

### SuperLift Girder Trolleys incorporate the following features:

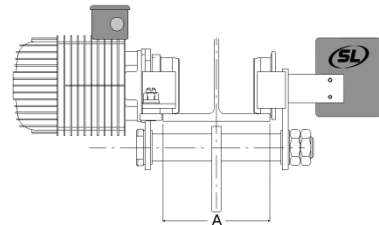
- Anti derailment plates for added safety
- Steel or High grade cast iron wheels depending on model.
- Double sealed ball bearings fitted to all wheels
- Universal wheels to suit either UB/C or R.S.J's
- Painted SuperLift Industrial grey enamel

### Optional Features P.O.A.

Wheels can be manufactured from different materials e.g., Bronze for spark proofing, nylon for silent running, stainless steel to prevent corrosion or steel for long life etc.

- Special surface finish eg, zinc plated, galvanizing, etc.
- Test certificates available only if requested at time of order
- Special trolleys e.g., extra close headroom, special applications etc..

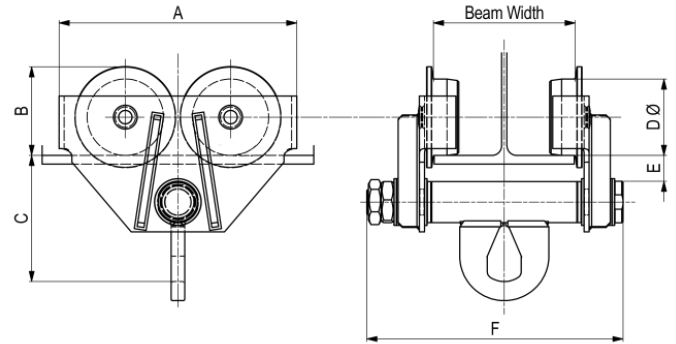
## Girder Trolleys – Motorized Type (AS1418)



| Product Code | WLL<br>kg | Beam Flange<br>Width (mm) "A" |
|--------------|-----------|-------------------------------|
| MTR-51S      | 1000      | 64-203                        |
| MTR-53S      |           | 203-330                       |
| MTR-101S     | 2000      | 89-203                        |
| MTR-103S     |           | 203-330                       |
| MTR-151S     | 3000      | 102-203                       |
| MTR-153S     |           | 203-330                       |
| MTR-201S     | 5000      | 114-203                       |
| MTR-203S     |           | 203-330                       |

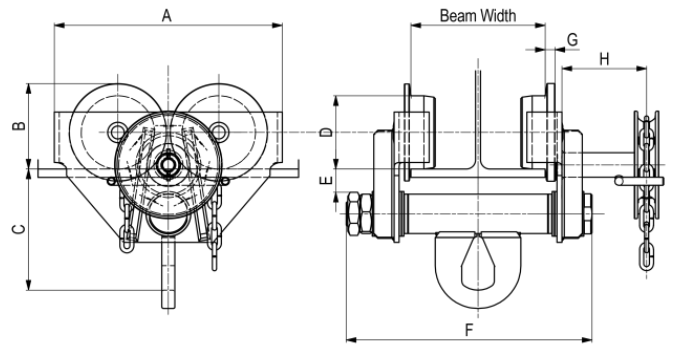
Standard drop of pendant is 2.5 meters.  
Special load measuring or batch weighing motorized trolleys are available.  
Consult Superlift technical Dept. for further details.

### Girder Trolleys – Push Type (AS1418)



| WLL Kg | Beam Flange Width (mm) |         | Product Code | A   | B   | C   | D   | E  | F   |     | G    |
|--------|------------------------|---------|--------------|-----|-----|-----|-----|----|-----|-----|------|
| 250    | 32-64                  |         | TR-1         | 140 | 55  | 85  | 50  | 20 | 140 |     | 8    |
| 500    | 64-108                 | 108-152 | TR-10        | 190 | 70  | 90  | 60  | 18 | 174 | 218 | 10.5 |
|        | 152-280                |         | TR-11        |     |     |     |     |    |     |     |      |
| 1000   | 64-134                 | 134-203 | TR-50        | 190 | 70  | 123 | 60  | 30 | 214 | 283 | 14.5 |
|        | 203-330                |         | TR-52        |     |     |     |     |    |     |     |      |
| 2000   | 89-152                 | 152-212 | TR-100       | 262 | 105 | 149 | 90  | 30 | 239 | 290 | 14.5 |
|        | 203-330                |         | TR-102       |     |     |     |     |    |     |     |      |
| 3000   | 102-152                | 152-203 | TR-150       | 310 | 115 | 184 | 100 | 30 | 239 | 290 | 14.5 |
|        | 203-330                |         | TR-152       |     |     |     |     |    |     |     |      |
| 5000   | 114-158                | 158-203 | TR-200       | 356 | 145 | 215 | 130 | 35 | 277 | 323 | 21.5 |
|        | 203-330                |         | TR-202       |     |     |     |     |    |     |     |      |
| 8000   | 127-203                |         | TR-250       | 434 | 173 | 327 | 155 | 55 | 374 |     | 27   |
|        | 203-330                |         | TR-252       |     |     |     |     |    |     |     |      |
| 10000  | 127-203                |         | TR-300       | 454 | 173 | 248 | 155 | 58 | 368 |     | 27   |
|        | 203-330                |         | TR-302       |     |     |     |     |    |     |     |      |

### Girder Trolleys – Geared Type (AS1418)



| WLL Kg | Beam Flange Width (mm) |         | Product Code | A   | B   | C   | D   | E  | F   |     | G    | H   |
|--------|------------------------|---------|--------------|-----|-----|-----|-----|----|-----|-----|------|-----|
| 1000   | 64-134                 | 134-203 | TR-51        | 190 | 70  | 123 | 60  | 30 | 214 | 283 | 14.5 | 105 |
|        | 203-330                |         | TR-53        |     |     |     |     |    |     |     |      |     |
| 2000   | 89-152                 | 152-212 | TR-101       | 262 | 105 | 149 | 90  | 30 | 239 | 290 | 14.5 | 105 |
|        | 203-330                |         | TR-103       |     |     |     |     |    |     |     |      |     |
| 3000   | 102-152                | 152-203 | TR-151       | 310 | 115 | 184 | 100 | 30 | 239 | 290 | 14.5 | 110 |
|        | 203-330                |         | TR-153       |     |     |     |     |    |     |     |      |     |
| 5000   | 114-158                | 158-203 | TR-201       | 356 | 145 | 215 | 130 | 35 | 277 | 323 | 21.5 | 127 |
|        | 203-330                |         | TR-203       |     |     |     |     |    |     |     |      |     |
| 8000   | 127-203                |         | TR-251       | 434 | 173 | 327 | 155 | 55 | 374 |     | 27   | 130 |
|        | 203-330                |         | TR-253       |     |     |     |     |    |     |     |      |     |
| 10000  | 127-203                |         | TR-301       | 454 | 173 | 248 | 155 | 58 | 368 |     | 27   | 136 |
|        | 203-330                |         | TR-303       |     |     |     |     |    |     |     |      |     |

. Standard drop of hand chain is 2.5 meters  
 Articulated swivel & extra close headroom trolleys, 15, 20, 25 and 30 tonne trolleys are also available.  
 Consult Superlift technical Dept. for further details.

All specifications & dimensions are subject to change without notice.

## Track Wheel Assemblies (AS1418)

SuperLift Track wheel assemblies are universal to suit either UB/C or R.S.J's.

### Features:

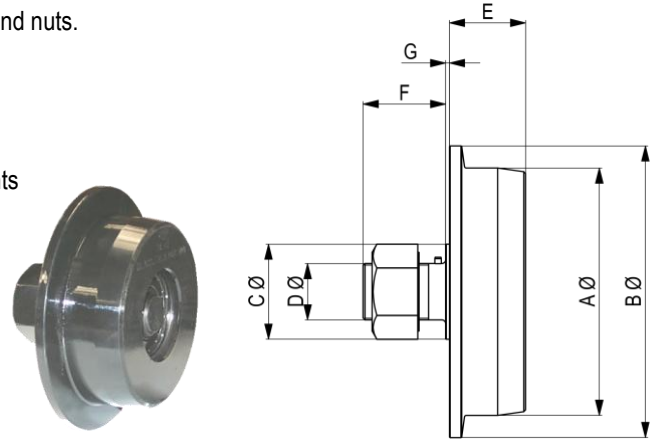
- Manufactured from high grade steel or cast iron
- Supplied fitted with double sealed ball bearings, keyed axles and nuts.
- Painted SuperLift black enamel for resistance to corrosion.

### Optional Features - P.O.A.

- Manufactured to suit higher capacities and different tracks
- Double flange and geared wheels to suit customer requirements

### Manufactured in alternative materials:

- Nylon for silent running
- Steel or S.G.iron for long life
- Stainless steel for corrosion protection
- Bronze for spark resistance



| Product Code | WLL / 4 Wheels Kg | Wheel Dia (A) | Material  | B   | C   | D    | E  | F  | G | U/W Kg |
|--------------|-------------------|---------------|-----------|-----|-----|------|----|----|---|--------|
| TW-1         | 250               | 50            | STEEL     | 60  | 22  | 12.7 | 19 | 20 | 2 | 0.28   |
| TW-11        | 500               | 60            | STEEL     | 80  | 30  | 19   | 35 | 29 | 3 | 0.8    |
| TW-21        | 1000              | 90            | STEEL     | 120 | 30  | 19   | 35 | 29 | 3 | 2.1    |
| TW-31        | 2000              | 100           | STEEL     | 134 | 33  | 25.4 | 40 | 37 | 3 | 2.4    |
| TW-41        | 4000              | 130           | STEEL     | 160 | 38  | 28.5 | 45 | 44 | 3 | 3.8    |
| TW-51        | 6000              | 155           | STEEL     | 190 | 45  | 28.5 | 53 | 48 | 3 | 7.6    |
| TW-61        | 8000              | 195           | CAST IRON | 230 | 75  | 44.5 | 60 | 65 | 3 | 15.6   |
| TW-71        | 10000             | 195           | CAST IRON | 230 | 75  | 44.5 | 60 | 65 | 3 | 15.6   |
| TW-81        | 12000             | 195           | CAST IRON | 230 | 75  | 44.5 | 60 | 65 | 3 | 15.6   |
| TW-91        | 15000             | 225           | CAST IRON | 265 | 89  | 50.8 | 78 | 73 | 5 | 21.8   |
| TW-101       | 20000             | 250           | CAST IRON | 290 | 100 | 63.5 | 89 | 89 | 5 | 35     |

## Overhaul Balls

SuperLift Overhaul Balls are easily fitted to crane ropes for the correct freefall weight to be achieved.

| Product Code | Wire Rope Dia. (mm) | Diameter (mm) | U/W Kg |
|--------------|---------------------|---------------|--------|
| OB - 1       | 10                  | 137           | 10     |
| OB - 23      | 12 - 16             | 181           | 23     |
| OB - 46      | 16 - 22             | 235           | 46     |





## Swivel Alloy Hooks (AS2318)

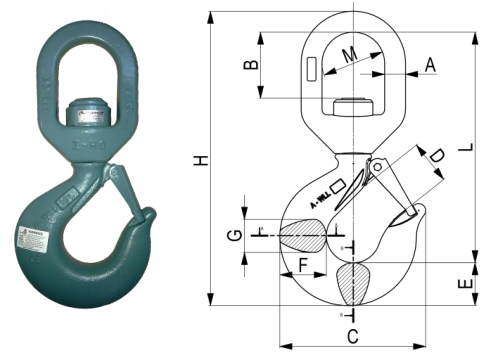
SuperLift Swivel Alloy Hooks are suitable as a sling part as well as a lifting accessory for cranes, crane trucks etc.. Swivel Alloy Hooks are good for offshore operations and for Grade 80 applications. The range covers from 1 Tonne to 25 Tonne in plain, bearing and electrically insulated types.

### Features:

- Heavy duty locking safety latch fitted as standard.
- Compact design for easy handling.
- Painted Super Lift Industrial grey enamel.

### Optional Features - P.O.A

- Extended length
- Weighted, with clevis or eye
- Special surface coatings i.e.; galvanizing, epoxy coatings etc.
- Grease nipples for pressure grease lubrication.
- Swivel hooks can be manufactured to suit any load rating or application.
- Test certificates only if requested at time of order.



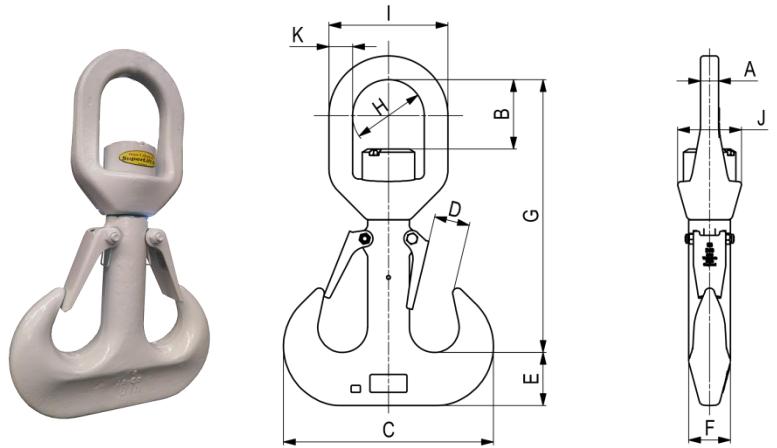
| PLAIN   |              |    |     |     |    |    |    |    |     |     |     |        |
|---|--------------|----|-----|-----|----|----|----|----|-----|-----|-----|--------|
| WLL Tonne   | Product Code | A  | B   | C   | D  | E  | F  | G  | H   | L   | M   | U/W Kg |
| 1.25  | SVH0100      | 10 | 28  | 77  | 20 | 20 | 22 | 15 | 154 | 122 | 30  | 0.43   |
| 1.6   | SVH0150      | 13 | 37  | 81  | 20 | 23 | 25 | 25 | 185 | 148 | 39  | 0.85   |
| 2.5   | SVH0200      | 18 | 50  | 94  | 22 | 27 | 30 | 19 | 206 | 163 | 48  | 1.21   |
| 3.2   | SVH0300      | 18 | 45  | 105 | 26 | 30 | 34 | 23 | 222 | 175 | 46  | 1.51   |
| 5.4   | SVH0450      | 22 | 60  | 128 | 33 | 38 | 42 | 28 | 270 | 213 | 64  | 3.7    |
| 8   | SVH0700      | 26 | 74  | 165 | 43 | 51 | 52 | 34 | 340 | 262 | 75  | 6.6    |
| 11.5  | SVH1100      | 30 | 78  | 190 | 48 | 61 | 67 | 42 | 400 | 310 | 90  | 10.25  |
| 16  | SVH1600      | 35 | 88  | 224 | 58 | 67 | 74 | 50 | 450 | 345 | 91  | 15.8   |
| 22  | SVH2200      | 43 | 117 | 280 | 77 | 82 | 90 | 65 | 570 | 444 | 118 | 26     |
| 25  | SVH2500      | 45 | 120 | 282 | 80 | 84 | 92 | 68 | 574 | 450 | 120 | 28     |
| WITH THRUST BEARINGS & SEALS                        |              |    |     |     |    |    |    |    |     |     |     |        |
| 5.4   | SVH0450T     | 22 | 60  | 128 | 33 | 38 | 42 | 28 | 270 | 213 | 64  | 3.7    |
| 8   | SVH0700T     | 26 | 74  | 165 | 43 | 51 | 52 | 34 | 340 | 262 | 75  | 6.6    |
| 11.5  | SVH1100T     | 30 | 78  | 190 | 48 | 61 | 67 | 42 | 400 | 310 | 90  | 10.25  |
| 14  | SVH1400T     | 35 | 100 | 193 | 58 | 61 | 67 | 44 | 313 | 398 | 97  | 12.4   |
| 16  | SVH1600T     | 35 | 88  | 221 | 58 | 67 | 74 | 50 | 450 | 345 | 91  | 15.8   |
| 18  | SVH1800T     | 43 | 147 | 224 | 61 | 69 | 76 | 52 | 500 | 395 | 115 | 17.8   |
| 22  | SVH2200T     | 43 | 117 | 280 | 77 | 82 | 90 | 65 | 570 | 444 | 118 | 26     |
| 25  | SVH2500T     | 45 | 120 | 282 | 80 | 84 | 92 | 68 | 574 | 450 | 120 | 28     |
| ELECTRICALLY INSULATED WITH THRUST BEARINGS & SEALS |              |    |     |     |    |    |    |    |     |     |     |        |
| 8   | SVH0800TE    | 26 | 74  | 165 | 43 | 51 | 52 | 34 | 340 | 262 | 75  | 6.6    |
| 16  | SVH1600TE    | 35 | 88  | 221 | 58 | 67 | 74 | 50 | 450 | 345 | 91  | 15.8   |

- Plain Type **Not to rotate under load**
- Bearing Type **Fitted with thrust bearing & seals to rotate under load**
- Electrically Insulated 1000v DC **Eliminates damage to hoists and equipment during welding operations**

## Duplex (Rams Horn) Swivel Hook (AS2318)

### Features:

- Heavy duty safety latches fitted as standard.
- Compact design for easy handling.
- Fitted with bearings and seals standard
- Designed to rotate under load.



| Product Code | WLL t. | Size V | Dimensions |     |     |    |    |    |     |     |     |     |    | U/W Kg. |
|--------------|--------|--------|------------|-----|-----|----|----|----|-----|-----|-----|-----|----|---------|
|              |        |        | A          | B   | C   | D  | E  | F  | G   | H   | I   | J   | K  |         |
| SVH054DT     | 5.4    | 2.5    | 15         | 50  | 208 | 32 | 50 | 40 | 250 | 58  | 96  | 60  | 19 | 9       |
| SVH080DT     | 8      | 4      | 17.5       | 65  | 238 | 36 | 60 | 48 | 293 | 72  | 120 | 70  | 24 | 13      |
| SVH115DT     | 11.5   | 4      | 22         | 68  | 238 | 36 | 60 | 48 | 304 | 82  | 136 | 82  | 27 | 14      |
| SVH160DT     | 16     | 6      | 24         | 84  | 301 | 45 | 75 | 60 | 371 | 92  | 154 | 92  | 31 | 23      |
| SVH220DT     | 22     | 8      | 29         | 107 | 337 | 50 | 85 | 67 | 445 | 115 | 191 | 108 | 38 | 35      |
| SVH315DT     | 31.5   | 10     | 34         | 117 | 377 | 56 | 95 | 75 | 485 | 132 | 222 | 132 | 45 | 60      |

## Alloy Shank Hooks (AS2318)

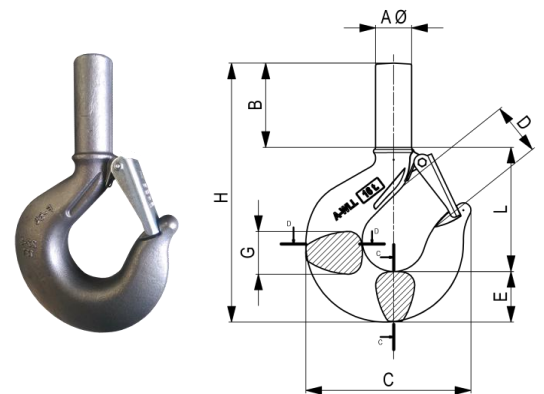
SuperLift Shank Hooks are the main component for blocks, swivel hooks, hoists and special lifting devices.  
The range covers from 1 Tonne to 30 Tonne.

### Features:

- Safety latch fitted as standard

### Optional Features - P.O.A

- Special shank hooks can be manufactured for example extended shanks
- Machining of shank hooks available

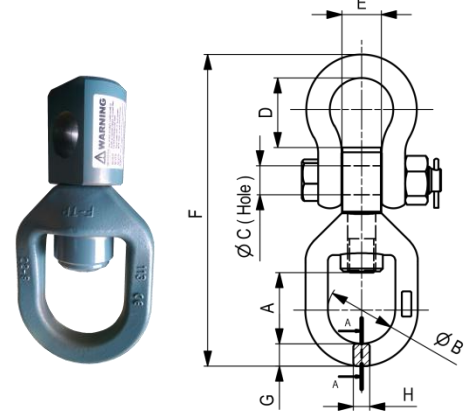


| Product Code | WLL t. | Dimensions |     |     |    |    |     |    |     |     |      | U/W Kg |
|--------------|--------|------------|-----|-----|----|----|-----|----|-----|-----|------|--------|
|              |        | A          | B   | C   | D  | E  | F   | G  | H   | L   |      |        |
| SH0100       | 1.25   | 15         | 51  | 77  | 20 | 20 | 22  | 15 | 154 | 122 | 0.27 |        |
| SH0150       | 1.6    | 20         | 57  | 81  | 20 | 23 | 25  | 25 | 149 | 69  | 0.45 |        |
| SH0200       | 2.5    | 22         | 64  | 94  | 22 | 27 | 30  | 19 | 159 | 69  | 0.6  |        |
| SH0300       | 3.2    | 25         | 66  | 105 | 26 | 30 | 34  | 23 | 176 | 82  | 0.9  |        |
| SH0450       | 5.4    | 29         | 82  | 128 | 33 | 38 | 42  | 28 | 216 | 98  | 2.05 |        |
| SH0700       | 8      | 36         | 96  | 165 | 43 | 51 | 52  | 34 | 265 | 122 | 3.75 |        |
| SH1100       | 11.5   | 43         | 103 | 190 | 48 | 61 | 67  | 42 | 318 | 155 | 5.9  |        |
| SH1600       | 16     | 50         | 111 | 224 | 58 | 68 | 75  | 50 | 345 | 167 | 9.8  |        |
| SH2200       | 22     | 60         | 138 | 275 | 76 | 82 | 86  | 64 | 427 | 209 | 16.4 |        |
| SH3000       | 30     | 67         | 300 | 295 | 80 | 95 | 112 | 90 | 620 | 240 | 34   |        |

## Swivel Eye (AS2318)

SuperLift Swivel Eyes are standard replacement head fittings used on Superlift Super Snatch blocks; Swivel Eyes are good for offshore and Grade 80 applications. The range covers from 3.2 Tonne to 31.5 Tonne in plain non bearing type, and are to suit grade "S" shackles.

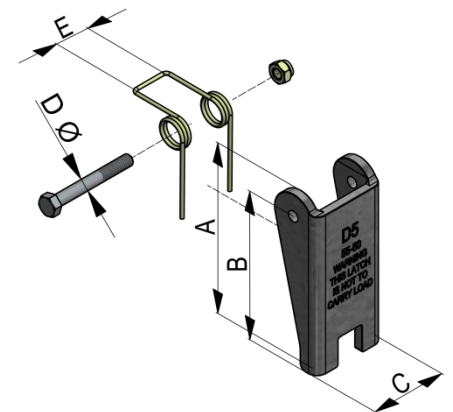
| Product Code | WLL t. | Suits Grade S Shackles | Dimensions |     |    |       |    |       |    |      |
|--------------|--------|------------------------|------------|-----|----|-------|----|-------|----|------|
|              |        |                        | A          | B   | C  | D     | E  | F     | G  | H    |
| SE3200       | 3.2    | 3.25                   | 48         | 47  | 21 | 46.5  | 25 | 229   | 16 | 12.5 |
| SE5400       | 5.4    | 5.4                    | 63.5       | 58  | 24 | 54    | 28 | 268.5 | 19 | 15   |
| SE8000       | 8      | 8.5                    | 76         | 72  | 31 | 74.5  | 42 | 333.5 | 24 | 17.5 |
| SE1150       | 11.5   | 12                     | 81         | 82  | 38 | 93    | 48 | 400   | 27 | 22   |
| SE1600       | 16     | 17                     | 91         | 92  | 45 | 118.5 | 56 | 476   | 31 | 24   |
| SE2200       | 22     | 25                     | 123        | 115 | 53 | 149.5 | 63 | 581.5 | 38 | 29   |
| SE2500       | 25     | 25                     | 126        | 132 | 53 | 144.5 | 63 | 584   | 45 | 34   |



## Heavy Duty Safety Latch Kits

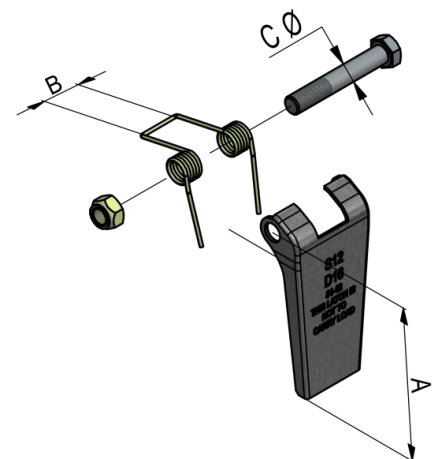
SuperLift safety latch kits suit most hook types.

| Product Code | Suit Hook WLL t. | Material Thickness | Dimensions |      |    |   |    |
|--------------|------------------|--------------------|------------|------|----|---|----|
|              |                  |                    | A          | B    | C  | D | E  |
| SK0100 D1    | 1.25             | 2                  | 39.5       | 32.5 | 17 | 4 | 7  |
| SK0150 D2    | 1.6              | 2                  | 43.5       | 35.5 | 23 | 4 | 10 |
| SK0200 D3    | 2.5              | 3                  | 50         | 42   | 25 | 4 | 12 |
| SK0300 D3    | 3.2              | 3                  | 50         | 42   | 25 | 4 | 12 |
| SK0450 D4    | 5.4              | 3                  | 61.5       | 51.5 | 29 | 5 | 14 |
| SK0700 D5    | 8                | 4                  | 78         | 67.5 | 35 | 5 | 14 |
| SK1100 D6    | 11.5             | 4                  | 87         | 76   | 37 | 6 | 16 |
| SK1600 D7    | 16               | 5                  | 96         | 85   | 49 | 6 | 23 |
| SK2200 D8    | 22               | 5                  | 132        | 117  | 54 | 6 | 28 |
| SK3000 D9    | 30               | 5                  | 152.5      | 135  | 64 | 8 | 28 |



## Safety Latch Kits to suit hook types DIN 15401 & DIN 15402

| Product Code | Dimensions |    |    | Hook Size   |             |
|--------------|------------|----|----|-------------|-------------|
|              | A          | B  | C  | Single Hook | Duplex Hook |
| SKDIN025     | 75         | 17 | 6  | 1.6 / 2.5   | -           |
| SKDIN040     | 84         | 20 | 6  | 4           | 4           |
| SKDIN050     | 96         | 20 | 10 | 5           | 6           |
| SKDIN060     | 106        | 20 | 10 | 6           | 8           |
| SKDIN080     | 122        | 25 | 12 | 8           | 10          |
| SKDIN100     | 132        | 25 | 12 | 10          | 12          |
| SKDIN120     | 150        | 30 | 16 | 12          | 16          |
| SKDIN160     | 170        | 35 | 16 | 16          | 20          |
| SKDIN200     | 198        | 40 | 16 | 20          | 25          |
| SKDIN250     | 212        | 40 | 16 | 25          | 32          |
| SKDIN320     | 236        | 50 | 20 | 32          | 40          |
| SKDIN400     | 265        | 54 | 20 | 40          | 50          |
| SKDIN500     | 300        | 54 | 24 | 50          | 63          |



## Custom Safety Latch Kits

Manufactured to suit any hook size or type, single or rams horn  
See Page No. 21 for request for quotation template.



All specifications & dimensions are subject to change without notice.

### Alloy Shank Hooks (15401 DIN 15402)

SuperLift Shank Hooks are the main component for sheave blocks, crane blocks, hoists and special lifting devices. The range covers 1 Tonne through to 500 Tonne in material Class P, T, & V.

#### Features:

- Drop Forged High strength material.
- Single Point & Duplex (ramshorn) available,
- Safety latch fitted as standard.

#### Optional Features - P.O.A

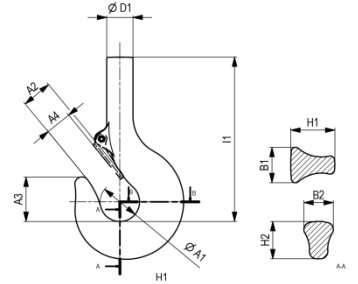
- Special shank hooks can be manufactured for example extended shanks
- Machining of shank hooks available

### Load Rating Chart in accordance with DIN 15400

| Stress Level | Average daily Use at full load.<br>Based on 220 service days per annum(11 months) |       |       |           |           |           |            |            |      |
|--------------|---|-------|-------|-----------|-----------|-----------|------------|------------|------|
|              | 10min   | 20min | 45min | 1hr.30min | 2hr.45min | 5hr.30min | 11hr.15min | 22hr.45min | 24hr |
| Light        |   |       |       | M3        | M4        | M5        | M6         | M7         |      |
| Medium       | -   | -     | M3    | M4        | M5        | M6        | M7         | M8         | M8   |
| Heavy        |   | M3    | M4    | M5        | M6        | M7        | M8         |            |      |
| Very Heavy   | M3  | M4    | M5    | M6        | M7        | M8        |            |            |      |

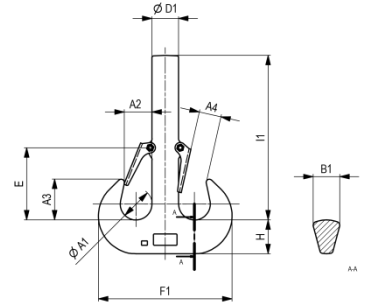
| CLASS | DRIVING GEAR GROUP     |     |      |      |      |      |      |      |      |      | CLASS |   |
|-------|------------------------|-----|------|------|------|------|------|------|------|------|-------|---|
| P     |                        |     |      | 1Bm  | 1Am  | 2m   | 3m   | 4m   | 5m   |      |       | P |
|       |                        |     |      | M3   | M4   | M5   | M6   | M7   | M8   |      |       |   |
| T     |                        | 1Bm | 1Am  | 2m   | 3m   | 4m   |      |      |      |      |       | T |
|       |                        | M3  | M4   | M5   | M6   | M7   |      |      |      |      |       |   |
| V     | 1Bm                    | 1Am | 2m   | 3m   | 4m   |      |      |      |      |      |       | V |
|       | M3                     | M4  | M5   | M6   | M7   |      |      |      |      |      |       |   |
| HOOK  | LOAD CAPACITIES TONNES |     |      |      |      |      |      |      |      |      | HOOK  |   |
| 4     | 20                     | 16  | 12.5 | 10   | 8    | 6.3  | 5    | 4    | 3.2  | 2.5  | 4     |   |
| 5     | 25                     | 20  | 16   | 12.5 | 10   | 8    | 6.3  | 5    | 4    | 3.2  | 5     |   |
| 6     | 32                     | 25  | 20   | 16   | 12.5 | 10   | 8    | 6.3  | 5    | 4    | 6     |   |
| 8     | 40                     | 32  | 25   | 20   | 16   | 12.5 | 10   | 8    | 6.3  | 5    | 8     |   |
| 10    | 50                     | 40  | 32   | 25   | 20   | 16   | 12.5 | 10   | 8    | 6.3  | 10    |   |
| 12    | 63                     | 50  | 40   | 32   | 25   | 20   | 16   | 12.5 | 10   | 8    | 12    |   |
| 16    | 80                     | 63  | 50   | 40   | 32   | 25   | 20   | 16   | 12.5 | 10   | 16    |   |
| 20    | 100                    | 80  | 63   | 50   | 40   | 32   | 25   | 20   | 16   | 12.5 | 20    |   |
| 25    | 125                    | 100 | 80   | 63   | 50   | 40   | 32   | 25   | 20   | 16   | 25    |   |
| 32    | 160                    | 125 | 100  | 80   | 63   | 50   | 40   | 32   | 25   | 20   | 32    |   |
| 40    | 200                    | 160 | 125  | 100  | 80   | 63   | 50   | 40   | 32   | 25   | 40    |   |
| 50    | 250                    | 200 | 160  | 125  | 100  | 80   | 63   | 50   | 40   | 32   | 50    |   |
| 63    | 320                    | 250 | 200  | 160  | 125  | 100  | 80   | 63   | 50   | 40   | 63    |   |
| 80    | 400                    | 320 | 250  | 200  | 160  | 125  | 100  | 80   | 63   | 50   | 80    |   |
| 100   | 500                    | 400 | 320  | 250  | 200  | 160  | 125  | 100  | 80   | 63   | 100   |   |
| 125   | -                      | 500 | 400  | 320  | 250  | 200  | 160  | 125  | 100  | 80   | 125   |   |

### Single Point Shank Hooks (DIN 15401)



| Product Code | Class Code P,T,V.   | Size | Dimensions |     |     |     |     |     |     |     |     |      | U/W Kg |
|--------------|---|------|------------|-----|-----|-----|-----|-----|-----|-----|-----|------|--------|
|              |   |      | A1         | A2  | A3  | A4  | B1  | B2  | D1  | H1  | H2  | I1   |        |
| 20-5-4       | ADD CLASS CODE OF HOOK REQUIRED TO PRODUCT CODE WHEN ORDERING | 4    | 71         | 56  | 80  | 48  | 63  | 53  | 48  | 80  | 67  | 285  | 10     |
| 20-5-5       |   | 5    | 80         | 63  | 90  | 56  | 71  | 60  | 53  | 90  | 75  | 318  | 12.5   |
| 20-5-6       |   | 6    | 90         | 71  | 101 | 62  | 80  | 67  | 60  | 100 | 85  | 380  | 18     |
| 20-5-8       |   | 8    | 100        | 80  | 113 | 71  | 90  | 75  | 67  | 112 | 95  | 418  | 31     |
| 20-5-10      |   | 10   | 112        | 90  | 127 | 81  | 100 | 85  | 75  | 125 | 106 | 452  | 39     |
| 20-5-12      |   | 12   | 125        | 100 | 143 | 90  | 112 | 95  | 85  | 140 | 118 | 510  | 54     |
| 20-5-16      |   | 16   | 140        | 112 | 160 | 100 | 125 | 106 | 95  | 160 | 132 | 582  | 82     |
| 20-5-20      |   | 20   | 160        | 125 | 180 | 110 | 140 | 118 | 106 | 180 | 150 | 653  | 110    |
| 20-5-25      |   | 25   | 180        | 140 | 202 | 125 | 160 | 132 | 118 | 200 | 170 | 724  | 157    |
| 20-5-32      |   | 32   | 200        | 160 | 225 | 145 | 180 | 150 | 132 | 224 | 190 | 796  | 215    |
| 20-5-40      |   | 40   | 224        | 180 | 252 | 166 | 200 | 170 | 150 | 250 | 212 | 893  | 310    |
| 20-5-50      |   | 50   | 250        | 200 | 285 | 185 | 224 | 190 | 170 | 280 | 236 | 990  | 430    |
| 20-5-63      |   | 63   | 280        | 224 | 320 | 208 | 250 | 212 | 190 | 315 | 265 | 1120 | 600    |
| 20-5-80      |   | 80   | 315        | 250 | 358 | 232 | 280 | 236 | 212 | 355 | 300 | 1270 | 860    |
| 20-5-100     |   | 100  | 355        | 280 | 402 | 260 | 315 | 265 | 236 | 400 | 335 | 1415 | 1220   |
| 20-5-120     |   | 125  | 400        | 315 | 450 | 292 | 355 | 300 | 265 | 450 | 375 | 1590 | 1740   |

### Duplex (Rams horn) Hooks (DIN 15402)



| Product Code | Class Code P,T,V.   | Size | Dimensions |     |     |     |     |     |     |      |     |      | U/W Kg |
|--------------|---|------|------------|-----|-----|-----|-----|-----|-----|------|-----|------|--------|
|              |   |      | A1         | A2  | A3  | A4  | B1  | D1  | E   | F1   | H   | I1   |        |
| 20-6-4       | ADD CLASS CODE OF HOOK REQUIRED TO PRODUCT CODE WHEN ORDERING | 4    | 56         | 45  | 73  | 36  | 48  | 48  | 124 | 238  | 60  | 280  | 9.4    |
| 20-6-6       |   | 6    | 71         | 56  | 92  | 45  | 60  | 60  | 160 | 301  | 75  | 375  | 18.3   |
| 20-6-8       |   | 8    | 80         | 63  | 103 | 50  | 67  | 67  | 182 | 337  | 85  | 415  | 27     |
| 20-6-10      |   | 10   | 90         | 71  | 116 | 56  | 75  | 75  | 192 | 377  | 95  | 450  | 38     |
| 20-6-12      |   | 12   | 100        | 80  | 130 | 68  | 85  | 85  | 210 | 421  | 106 | 510  | 52.6   |
| 20-6-16      |   | 16   | 112        | 90  | 146 | 77  | 95  | 95  | 237 | 471  | 118 | 580  | 70     |
| 20-6-20      |   | 20   | 125        | 100 | 163 | 85  | 106 | 106 | 265 | 531  | 132 | 650  | 98     |
| 20-6-25      |   | 25   | 140        | 112 | 182 | 95  | 118 | 118 | 315 | 598  | 150 | 715  | 134    |
| 20-6-32      |   | 32   | 160        | 125 | 205 | 106 | 132 | 132 | 335 | 672  | 170 | 790  | 184    |
| 20-6-40      |   | 40   | 180        | 140 | 230 | 120 | 150 | 150 | 375 | 754  | 190 | 885  | 382    |
| 20-6-50      |   | 50   | 200        | 160 | 260 | 135 | 170 | 170 | 420 | 842  | 212 | 965  | 392    |
| 20-6-63      |   | 63   | 224        | 180 | 292 | 155 | 190 | 190 | 460 | 944  | 236 | 1090 | 547    |
| 20-6-80      |   | 80   | 250        | 200 | 325 | 170 | 212 | 212 | 515 | 1062 | 265 | 1235 | 759    |
| 20-6-100     |   | 100  | 280        | 224 | 364 | 190 | 236 | 236 | 575 | 1186 | 300 | 1375 | 1060   |
| 20-6-120     |   | 125  | 315        | 250 | 408 | 215 | 265 | 265 | 645 | 1330 | 335 | 1550 | 1491   |

All specifications & dimensions are subject to change without notice.

## Load Brake Hand Winches (AS 1418)

SuperLift Heavy Duty Load Brake Hand winches range from 500Kg to 3000Kg

### SuperLift Hand winches incorporate the following features:

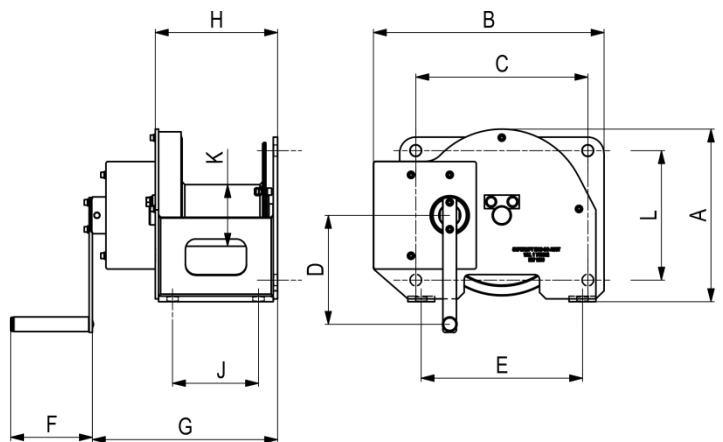
- Designed and manufactured in Australia to AS 1418 for hoisting applications
- Heavy duty steel construction
- Base and side mounting points HW 500 & HW1000 only
- All rotating parts fitted with ball bearings sealed for life
- Fitted with an automatic load brake protected by a steel cover
- A revolving hand grip is integral with the steel handle
- Rope is anchored to the drum via three screws, accessible through the rear side plate
- Supplied painted SuperLift industrial grey enamel

### Optional Features - P.O.A.

- Secondary mechanical dead man brake for personnel or hazardous applications
- Special protective paint coatings
- Manufactured from stainless steel

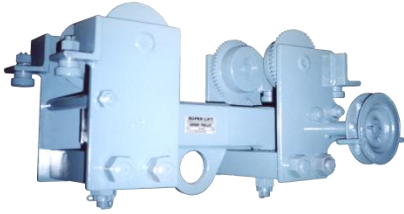


HW - 1000



| PRODUCT CODE                            | HW - 500   | HW - 1000  | HW - 2000  | HW - 3000  |
|---|------------|------------|------------|------------|
| Maximum Rope Tension (kg)               | 500        | 1000       | 2000       | 3000       |
| Minimum Breaking Strength (kg)          | 2000       | 4000       | 8000       | 12000      |
| Rope Capacity (m)                       | 40         | 70         | 35         | 30         |
| Drum Material                           | STEEL      | STEEL      | STEEL      | STEEL      |
| Frame Material                          | STEEL      | STEEL      | STEEL      | STEEL      |
| Diameter Of Mounting Holes (mm)         | 18         | 21         | 22         | 22         |
| Rope Diameter (mm)                      | 6.3        | 8          | 14         | 16         |
| Rope Construction                       | 7x19       | 7x19       | 7x19       | 7x19       |
| Rope Grade                              | 2070       | 2070       | 2070       | 2070       |
| Effort On Handle to lift full load (kg) | 17         | 17         | 17         | 17         |
| U/W Kg                                  | 15         | 35         | 110        | 145        |
| A                                       | 205        | 314        | 455        | 470        |
| B                                       | 280        | 424        | 485        | 500        |
| C                                       | 220        | 320        | N/A        | N/A        |
| D                                       | 200 RADIUS | 200 RADIUS | 325 RADIUS | 325 RADIUS |
| E                                       | 190        | 300        | 400        | 400        |
| F                                       | 106        | 106        | 130        | 130        |
| G                                       | 265        | 344        | 412        | 412        |
| H                                       | 187        | 222        | 339        | 339        |
| J                                       | 136        | 160        | 254        | 254        |
| K                                       | 102        | 114        | 220        | 220        |

## CUSTOM GIRDER TROLLEYS



WLL 6t Articulated Swivel Geared Girder Trolley



WLL 6 t Extended chain drive Geared Girder Trolley

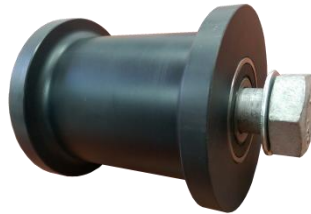


WLL 23 t Close Headroom 8 wheel Geared Girder Trolley

## CUSTOM TRACK WHEELS



WLL 80 t Fully Machined Alloy Steel



WLL 1t Double Flange Engineering Nylon



WLL 10 t Geared Crane Wheels

## CUSTOM SWIVEL BOTTOM FIXINGS / HOOKS



WLL 5t Double fall Rope Swivel Hook



WLL 55t 1600 kg Heavy Weight Swivel Hook



WLL 5t 160kg Swivel Hook



WLL 100 t Duplex Swivel Hook

Request for quotation forms for custom products are provided in the next few pages.  
Fill in and return as indicated for prompt quotation.

*All specifications & dimensions are subject to change without notice.*

Ph: +(613) 9357 0277

[www.superlift.com.au](http://www.superlift.com.au)

Fax: +(613) 9357 0621

# CUSTOM PRODUCT

# REQUEST FOR QUOTATION

|               |     |              |
|---------------|-----|--------------|
| CUSTOMER NAME |     | DATE         |
| ADDRESS       |     | CONTACT NAME |
| TELEPHONE     | FAX | E-MAIL       |

**TYPE OF DEVICE** (Please  one only)

**Girder Trolley / Track Wheel Type**

- Push
- Geared
- Motorised
- Swivel Articulated

**Track Wheel Type** (Please  one only)

- Single Flange
- Double Flange

**GIRDER TROLLEY**

Application / Environmental Conditions Used. \_\_\_\_\_

Minimum Beam radius required \_\_\_\_\_ mm

If Geared Hand chain drop required? \_\_\_\_\_ m

**BEAM / TRACK DETAILS**

Flange Width \_\_\_\_\_ mm

Flange Thickness \_\_\_\_\_ mm

Other (Specify Profile, Width & Thickness) \_\_\_\_\_

**CAPACITY, DIMENSIONS**

Headroom \_\_\_\_\_ mm

Working Load Limit \_\_\_\_\_ Metric Tonnes

Design Class \_\_\_\_\_

**SPECIAL REQUIREMENTS**

Coating (Otherwise standard SuperLift coating system used)

Proof Load Testing (Please  if required)

Other (Please Specify) \_\_\_\_\_



# CUSTOM SHEAVES

# REQUEST FOR QUOTATION

|               |     |              |
|---------------|-----|--------------|
| CUSTOMER NAME |     | DATE         |
| ADDRESS       |     | CONTACT NAME |
| TELEPHONE     | FAX | E-MAIL       |

## SHEAVE

Rope Diameter (E) mm \_\_\_\_\_

Type of Rope (Please  one only)

Fibre

Wire

Outside Diameter (A) mm \_\_\_\_\_

Boss Diameter (B) optional) mm \_\_\_\_\_

Rim Width (F) mm \_\_\_\_\_

Boss Width (G) mm \_\_\_\_\_

Material (if known) \_\_\_\_\_

Quantity \_\_\_\_\_

Shaft Diameter (D) mm \_\_\_\_\_

Application / Environmental Conditions used. \_\_\_\_\_

## **BEARINGS** (Please one only)

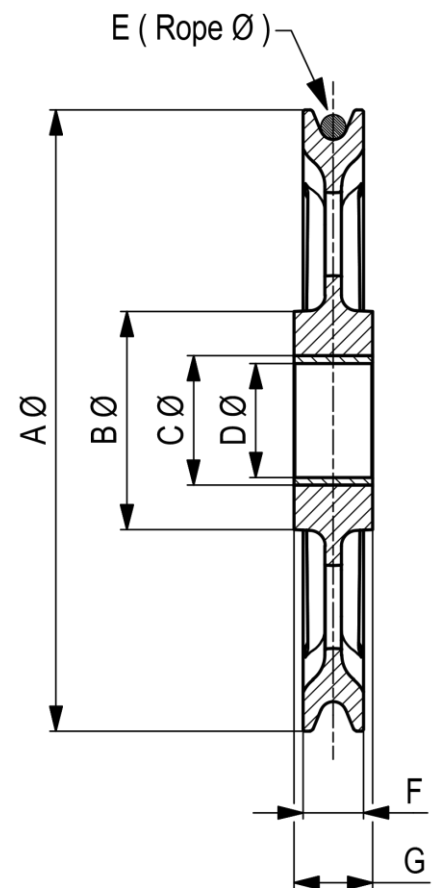
High Capacity PTFE Bush

Bronze Bush

Roller Bearing

Tapered Roller Bearing

Bearing Part No. / Other (Please Specify) \_\_\_\_\_



## **SPECIAL REQUIREMENTS**

Coating (Otherwise standard SuperLift coating system used) \_\_\_\_\_

Proof Load Testing (Please  if required)

Other (Please Specify) \_\_\_\_\_

# CUSTOM SHEAVE BLOCKS      REQUEST FOR QUOTATION

|               |     |              |
|---------------|-----|--------------|
| CUSTOMER NAME |     | DATE         |
| ADDRESS       |     | CONTACT NAME |
| TELEPHONE     | FAX | E-MAIL       |

## BLOCK

Working Load Limit (At the Head Fitting)

\_\_\_\_\_ Metric Tonnes

Application / Environmental Conditions used.

\_\_\_\_\_

**HEAD FITTING TYPE** (Please  one only)

Hook Single

Duplex (Rams Horn)

Swivel Eye

Fixed Shackle

Other (Please Specify) \_\_\_\_\_

## SHEAVES

Number of Sheaves \_\_\_\_\_

**Type of Rope** (Please  one only)

Fibre

Wire

Rope Diameter \_\_\_\_\_ mm

Becket

**BEARINGS** (Please  one only)

High Capacity PTFE Bush

Bronze Bush

Roller Bearing

Tapered Roller Bearing

Other (Please Specify) \_\_\_\_\_

## SPECIAL REQUIREMENTS

Coating (Otherwise standard SuperLift coating system used) \_\_\_\_\_

Proof Load Testing (Please  if required)

Other (Please Specify) \_\_\_\_\_

# CUSTOM CRANE BLOCKS

# REQUEST FOR QUOTATION

|               |     |              |
|---------------|-----|--------------|
| CUSTOMER NAME |     | DATE         |
| ADDRESS       |     | CONTACT NAME |
| TELEPHONE     | FAX | E-MAIL       |

**TYPE OF CRANE** (Please  one only)

Over Head Travelling Crane (OHTC)

Mobile Crane

Application / Environmental Conditions used. \_\_\_\_\_

**SHEAVES**

Number of Sheaves \_\_\_\_\_

Outside Diameter \_\_\_\_\_ mm

Rope Diameter \_\_\_\_\_ mm

**BEARINGS**

High Capacity PTFE Bush

Bronze Bush

Roller Bearing

Tapered Roller Bearing

Other (Specify) \_\_\_\_\_

**BLOCK CAPACITY, DIMENSIONS & WEIGHT**

If multiple sheaves centre distance between all sheaves \_\_\_\_\_ mm

Working Load Limit \_\_\_\_\_ Metric Tonnes

Design Class \_\_\_\_\_

If Replacement Weight \_\_\_\_\_ KG

**HEAD FITTING TYPE** (Please  one only)

Hook Single

Duplex (Rams Horn)

Swivel Eye

Fixed Shackle

Other (Please Specify) \_\_\_\_\_

Motorized Hook

**SPECIAL REQUIREMENTS**

Coating (Otherwise standard SuperLift coating system used)

Proof Load Testing (Please  if required)

Other (Please Specify) \_\_\_\_\_

# CUSTOM MACHINED HOOKS                      REQUEST FOR QUOTATION

|               |     |              |
|---------------|-----|--------------|
| CUSTOMER NAME |     | DATE         |
| ADDRESS       |     | CONTACT NAME |
| TELEPHONE     | FAX | E-MAIL       |

### HOOK

Working Load Limit (At the Head Fitting) \_\_\_\_\_ Metric Tonnes  
 Application / Environmental Conditions used. \_\_\_\_\_

**TYPE** (Please  one only)

- Single
- Duplex (Rams Horn)

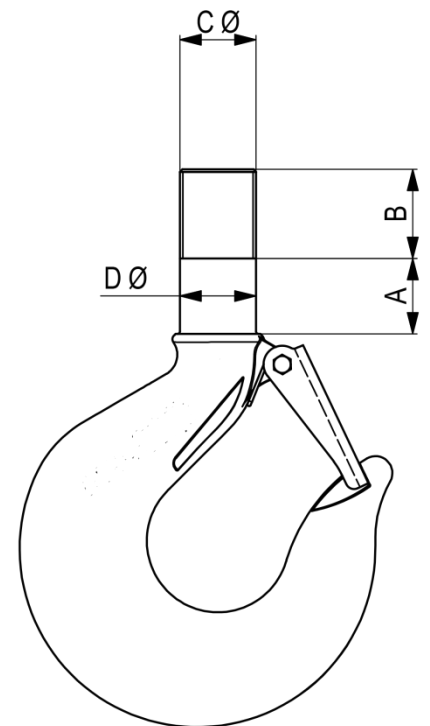
Size (Din, Euro style) \_\_\_\_\_  
 Other (Please Specify) \_\_\_\_\_

### DIMENSIONS

Shank length (A) \_\_\_\_\_  
 Thread length (B) \_\_\_\_\_  
 Thread Diameter (C) \_\_\_\_\_  
 Shank Diameter (D) \_\_\_\_\_

**NUT** (Please  one only)

- Round Nut
- Hexagon Nut
- Nut Locking, (Dim. A. must be exact to underside of nut,  if required)
- Other (Please Specify) \_\_\_\_\_



### SPECIAL REQUIREMENTS

Coating (Otherwise standard SuperLift coating system used) \_\_\_\_\_  
 Proof Load Testing (Please  if required)   
 Other (Please Specify) \_\_\_\_\_

# CUSTOM SAFETY LATCH KITS      REQUEST FOR QUOTATION

|               |     |              |
|---------------|-----|--------------|
| CUSTOMER NAME |     | DATE         |
| ADDRESS       |     | CONTACT NAME |
| TELEPHONE     | FAX | E-MAIL       |

## HOOK

Working Load Limit (At the Head Fitting) \_\_\_\_\_ Metric Tonnes

Application / Environmental Conditions used. \_\_\_\_\_

**TYPE** (Please  one only)

Single

Duplex (Rams Horn)

Size (Din, Euro style) \_\_\_\_\_

Other (Please Specify) \_\_\_\_\_

## DIMENSIONS

Shank Diameter (A) \_\_\_\_\_ mm

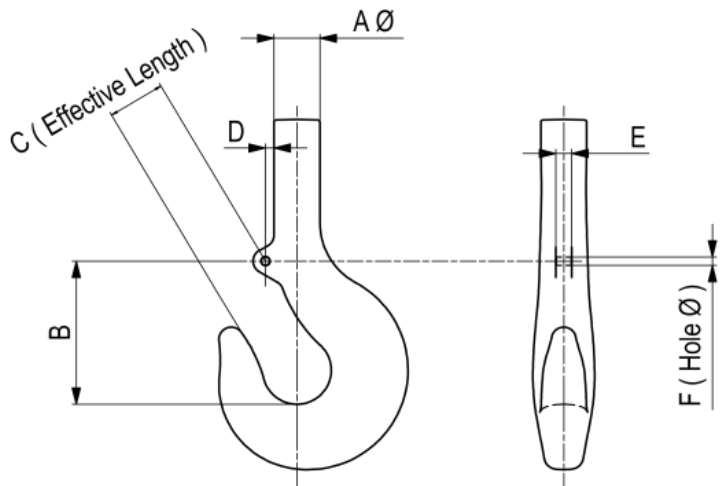
Length (B) \_\_\_\_\_ mm

Throat Opening (C) \_\_\_\_\_ mm

Distance (D) \_\_\_\_\_ mm

Lug Width (E) \_\_\_\_\_ mm

Hole Diameter (F) \_\_\_\_\_ mm



## SPECIAL REQUIREMENTS

Coating (Otherwise standard SuperLift coating system used) \_\_\_\_\_

Other (Please Specify) \_\_\_\_\_

## TESTING AND INSPECTION

### Mechanical Load Testing Facilities

Our laboratory testing facilities comply with the requirements of,  
**AS/NZS ISO/IEC 17020**  
**AS/NZS ISO/IEC 17025**

Class AA 250 tonne Horizontal Test Bed

Class AA 50 tonne Vertical Test Tower



### Magnetic Particle Inspection (MPI)

Our laboratory testing facilities comply with the requirements of,  
**AS/NZS ISO/IEC 1171-1998**  
**ASTM E1444**

Magnetic Particle Inspection (MPI) is an extension of visual inspection. This critical technique for non-destructive testing (NDT) is used for the detection of surface and near-surface flaws (discontinuities) in ferromagnetic materials



## Terms & Conditions of Sale

### 1. Exclusion of other terms and conditions.

The following terms and condition shall apply to the sale of all goods by Super Lift Engineering Pty Ltd to the exclusion of any and all terms and conditions in any documents submitted to Super Lift Engineering Pty Ltd by the customer.

### 2. Basis of acceptance of quotations.

All quotations are based on information provided by the customer (or by third parties on its behalf). Any extra cost or expense arising from incorrect information shall be paid by the customer.

### 3. Prices.

Any quotation submitted or any price set out in any price list is based on the cost of labour and materials at the date of the price list or quotation. Super lift Engineering Pty Ltd may at its discretion increase any such price to reflect changes in the price of labour and materials and manufacturing overheads.

### 4. Terms of payment.

Unless Super Lift engineering Pty Ltd in its discretion agrees to accept payment for goods on deferred terms, the customer shall pay for all goods delivered by Super Lift Engineering Pty Ltd within 30 days from the last day of the month in which the goods are so despatched.

Minimum invoice value of \$75, all orders below this figure will result in a surcharge being applied. Title of goods remains the property of Super Lift Engineering Pty Ltd until paid for in full.

### 5. Literature.

Advertising and other literature provided by super lift engineering contains general information only and no such information is to form part of any contract between super lift engineering and the customer.

### 6. Guarantee.

6.1; Super Lift Engineering agrees to repair or replace any parts or equipment supplied by in which develop defects as a result of the use by super lift engineering of faulty material or workmanship within the period of three months after the date of delivery. Any parts that require repair or replacement shall be replaced at the works of Super lift engineering. The cost of freight both ways is to be borne by the customer. Any repaired parts shall become the property of Super Lift Engineering Pty Ltd.

6.2; This guarantee does not include liability for fair wear and tear, negligence or wilful default.

6.3; The benefits conferred by this guarantee are in addition to all other rights and remedies in respect of the goods which the customer has under the trades practices act 1974 ("the act" ) or any binding enactment of any state or territory which cannot be excluded by agreement.

6.4; In a case in which the goods are other than a kind ordinarily acquired for personnel, domestic or household consumption Super Lift Engineering's liability for any breach of a condition or warranty implied by division 2 of the act (other than a condition or warranty implied by section 69 of the act) is limited to any one or more of the following; (as determined by Super Lift Engineering Pty Ltd in its absolute discretion).

- ( i ) the replacement of the goods or supply of equivalent goods; or
- ( ii ) the repair of the goods; or
- ( iii ) the payment of the cost of replacing of the goods or of acquiring equivalent goods; or
- ( iv ) the payment of the cost of having the goods repaired.

6.5; if Super Lift Engineering becomes liable to indemnify a seller pursuant to section 74h of the act then such liability is limited to a payment of the of the sum equal to either;

- ( i ) the cost of replacing the goods; or
- ( ii ) the cost of obtaining equivalent goods; or
- ( iii ) the cost of having the goods repaired, whichever the less.

6.6; the foregoing sets out the obligations of Super Lift Engineering Pty Ltd concerning the goods and all other conditions and warranties which may be lawfully excluded whether as to merchantable quality, fitness for any particular purpose, conformity with description or with a sample and whether express or implied by the law are hereby expressly negated and excluded.

6.7; any alteration, modification or defacing of a Super lift product by any means will void all warranties and liabilities.

### 7. Delivery.

Any time for delivery which is given as an estimate only and super lift engineering will use all reasonable efforts to deliver by such time but in no case shall Super Lift Engineering be liable for any consequential damages in respect of any loss suffered by the customer as a result of any failure to deliver by any specified date.

### 8. G.S.T.

Super Lift Engineering shall be entitled to charge and recover from the customer the amount of any G.S.T. payable in respect of the sale of the goods to the customer.

### 9. Risk.

All goods supplied by Super Lift Engineering Pty Ltd to the customer will be at the customer's risk from the time of despatch.

### 10. Victorian law.

This contract shall be construed and take effect in accordance with the laws of the state of Victoria, Australia.

### 11. Credits

A restocking and handling charge of 20 % of the invoice value or \$120.00 will apply to all returned goods, whichever the greater.

No credits or returns will be accepted unless claims are made within seven days of despatch, all goods returned must be freight paid and invoice and return authorisation number quoted. Specially manufactured or products not normally stocked or procured goods will not be accepted for credit.

### 12. Copyright

Price lists, catalogues, internet information, brochures, data sheets or images cannot be reproduced in any shape, manner or form, without the prior written permission from Super Lift Engineering Pty Ltd

### CONVERSION TABLES

| Multiply                           | By            | To Obtain                            |
|------------------------------------|---------------|--------------------------------------|
| <b>LENGTH</b>                      |               |                                      |
| centimetre                         | 0.0328084     | foot                                 |
| centimetre                         | 0.3937008     | inch                                 |
| fathom                             | 1.8288        | metre (m)                            |
| foot                               | 0.3048        | metre (m)                            |
| foot                               | 30.48         | centimetre (cm)                      |
| foot                               | 304.8         | millimetre (mm)                      |
| inch                               | 0.0254*       | metre (m)                            |
| inch                               | 2.54          | centimetre (cm)                      |
| inch                               | 25.4          | millimetre (mm)                      |
| kilometre                          | 0.6213712     | mile (U.S. statute)                  |
| metre                              | 39.37008      | inch                                 |
| metre                              | 0.5468066     | fathom                               |
| metre                              | 3.28084       | foot                                 |
| metre                              | 0.1988388     | rod                                  |
| metre                              | 1.093613      | yard                                 |
| metre                              | 0.0006213712  | mile (U.S. statute)                  |
| micrometre (micron)                | 39.37008      | microinch                            |
| millimetre                         | 0.00328084    | foot                                 |
| millimetre                         | 0.03937008    | inch                                 |
| yard                               | 0.9144*       | metre (m)                            |
| <b>AREA</b>                        |               |                                      |
| acre                               | 4046.856      | metre <sup>2</sup> (m <sup>2</sup> ) |
| acre                               | 0.4046856     | hectare                              |
| hectare                            | 2.471054      | acre                                 |
| metre <sup>2</sup>                 | 1550.003      | inch <sup>2</sup>                    |
| metre <sup>2</sup>                 | 10.76391      | foot <sup>2</sup>                    |
| metre <sup>2</sup>                 | 1.19599       | yard <sup>2</sup>                    |
| metre <sup>2</sup>                 | 0.0002471054  | acre                                 |
| yard <sup>2</sup>                  | 0.8361274     | metre <sup>2</sup> (m <sup>2</sup> ) |
| <b>VOLUME (including CAPACITY)</b> |               |                                      |
| foot <sup>3</sup>                  | 0.02831685    | metre <sup>3</sup> (m <sup>3</sup> ) |
| foot <sup>3</sup>                  | 28.31685      | litre                                |
| litre                              | 0.001*        | metre <sup>3</sup> (m <sup>3</sup> ) |
| litre                              | 0.2199692     | gallon (U.K. liquid)                 |
| litre                              | 0.264172      | gallon (U.S. liquid)                 |
| litre                              | 0.03531466    | foot <sup>3</sup>                    |
| metre <sup>3</sup>                 | 219.9692      | gallon (U.K. liquid)                 |
| metre <sup>3</sup>                 | 264.172       | gallon (U.S. liquid)                 |
| metre <sup>3</sup>                 | 35.31466      | foot <sup>3</sup>                    |
| metre <sup>3</sup>                 | 1.307951      | yard <sup>3</sup>                    |
| metre <sup>3</sup>                 | 1000.*        | litre                                |
| metre <sup>3</sup>                 | 61023.76      | inch <sup>3</sup>                    |
| millimetre <sup>3</sup>            | 0.00006102376 | inch <sup>3</sup>                    |
| yard <sup>3</sup>                  | 0.7645549     | metre <sup>3</sup> (m <sup>3</sup> ) |
| <b>FORCE and FORCE/LENGTH</b>      |               |                                      |
| kilogram-force                     | 9.80665*      | newton (N)                           |
| newton                             | 0.1019716     | kilogram-force                       |
| newton/metre                       | 0.005710148   | pound/inch                           |
| newton/metre                       | 0.06852178    | pound/foot                           |
| ounce/force                        | 0.2780139     | newton (N)                           |
| pound/force                        | 4.448222      | newton (N)                           |
| pound/inch                         | 175.1268      | newton/metre (N/m)                   |
| pound/foot                         | 14.5939       | newton/metre (N/m)                   |
| <b>POWER</b>                       |               |                                      |
| foot-pound/hour                    | 0.0003766161  | watt (W)                             |
| foot-pound/minute                  | 0.02259697    | watt (W)                             |
| horsepower(electric)               | 746.*         | watt (W)                             |
| horsepower (metric)                | 735.499       | watt (W)                             |
| horsepower (U.K.)                  | 745.7         | watt (W)                             |
| horsepower(550 ft-lbs)             | 0.7456999     | kilowatt (kW)                        |
| horsepower(550 ft-lbs)             | 745.6999      | watt (W)                             |
| kilowatt                           | 1.341022      | horsepower(550 ft-lbs)               |
| Btu (International Table)/hour     | 0.2930711     | watt (W)                             |

| Multiply                                   | By            | To Obtain                                     |
|--|---------------|---|
| <b>MASS and DENSITY</b>                    |               |   |
| gram                                       | 15.43236      | grain   |
| gram                                       | 0.001*        | kilogram (kg)                                 |
| hundredweight (long)                       | 50.80235      | kilogram (kg)                                 |
| hundredweight (short)                      | 45.35924      | kilogram (kg)                                 |
| kilogram                                   | 1000.*        | gram (g)                                      |
| kilogram                                   | 35.27397      | ounce (avoirdupois)                           |
| kilogram                                   | 32.15074      | ounce (troy)                                  |
| kilogram                                   | 2.204622      | pound (avoirdupois)                           |
| kilogram                                   | 0.06852178    | slug  |
| kilogram                                   | 0.0009842064  | ton (long)                                    |
| kilogram                                   | 0.001102311   | ton (short)                                   |
| kilogram                                   | 0.001*        | ton (metric)                                  |
| kilogram                                   | 0.001*        | tonne   |
| kilogram                                   | 0.01968413    | hundredweight (long)                          |
| kilogram                                   | 0.02204622    | hundredweight (short)                         |
| kilogram/metre <sup>3</sup>                | 0.06242797    | pound/foot <sup>3</sup>                       |
| kilogram/metre <sup>3</sup>                | 0.01002242    | pound/gallon UK.liquid                        |
| kilogram/metre <sup>3</sup>                | 0.008345406   | pound/gallon US.liquid                        |
| pound (avoirdupois)                        | 0.4535924     | kilogram (kg)                                 |
| pound/foot <sup>3</sup>                    | 16.01846      | kilogram/metre <sup>3</sup>                   |
| pound/inch <sup>3</sup>                    | 27.6799       | gram/centimetre <sup>3</sup>                  |
| pound/gallon US.liquid.                    | 119.8264      | kilogram/metre <sup>3</sup>                   |
| pound/gallon UK.liquid.                    | 99.77633      | kilogram/metre <sup>3</sup>                   |
| slug                                       | 14.5939       | kilogram (kg)                                 |
| ton (long 2240lb)                          | 1016.047      | kilogram (kg)                                 |
| ton (short 2000lb)                         | 907.1847      | kilogram (kg)                                 |
| ton (metric)                               | 1000.*        | kilogram (kg)                                 |
| tonne                                      | 1000.*        | kilogram (kg)                                 |
| <b>PRESSURE</b>                            |               |   |
| atmosphere (14.6959 lb/inch <sup>2</sup> ) | 101.325       | pascal (Pa)                                   |
| bar  | 100,000.*     | pascal (Pa)                                   |
| bar  | 14.50377      | pound/inch <sup>2</sup>                       |
| bar  | 100,000.*     | newton/metre <sup>2</sup> (N/m <sup>2</sup> ) |
| kilogram/centimetre <sup>2</sup>           | 14.22334      | pound/inch <sup>2</sup>                       |
| kilogram/metre <sup>2</sup>                | 9.806650*     | newton/metre <sup>2</sup> (N/m <sup>2</sup> ) |
| kilogram/metre <sup>2</sup>                | 9.806650*     | pascal (Pa)                                   |
| kilogram/metre <sup>2</sup>                | 0.2048161     | pound/foot <sup>2</sup>                       |
| kilonewton/metre <sup>2</sup>              | 0.1450377     | pound/inch <sup>2</sup>                       |
| newton/centimetre <sup>2</sup>             | 1.450377      | pound/inch <sup>2</sup>                       |
| newton/metre <sup>2</sup>                  | 0.00001       | bar   |
| newton/metre <sup>2</sup>                  | 1.0*          | pascal (Pa)                                   |
| newton/metre <sup>2</sup>                  | 0.0001450377  | pound/inch <sup>2</sup>                       |
| newton/metre <sup>2</sup>                  | 0.1019716     | kilogram/metre <sup>2</sup>                   |
| newton/millimetre <sup>2</sup>             | 145.0377      | pound/inch <sup>2</sup>                       |
| pascal                                     | 0.00000986923 | atmosphere                                    |
| pascal                                     | 0.00001*      | bar   |
| pascal                                     | 0.1019716     | kilogram/metre <sup>2</sup>                   |
| pascal                                     | 1.0*          | newton/metre <sup>2</sup> (N/m <sup>2</sup> ) |
| pascal                                     | 0.02088543    | pound/foot <sup>2</sup>                       |
| pascal                                     | 0.0001450377  | pound/inch <sup>2</sup>                       |
| pound/foot <sup>2</sup>                    | 4.882429      | kilogram/metre <sup>2</sup>                   |
| pound/foot <sup>2</sup>                    | 47.88026      | pascal (Pa)                                   |
| pound/inch <sup>2</sup>                    | 0.06894757    | bar   |
| pound/inch <sup>2</sup>                    | 0.07030697    | kilogram/centimetre <sup>2</sup>              |
| pound/inch <sup>2</sup>                    | 0.6894757     | newton/centimetre <sup>2</sup>                |
| pound/inch <sup>2</sup>                    | 6.894757      | kilonewton/metre <sup>2</sup>                 |
| pound/inch <sup>2</sup>                    | 6894.757      | newton/metre <sup>2</sup> (N/m <sup>2</sup> ) |
| pound/inch <sup>2</sup>                    | 0.006894757   | newton/millimetre <sup>2</sup>                |
| pound/inch <sup>2</sup>                    | 6894.757      | pascal (Pa)                                   |

\* Where an asterisk is shown, the figure is exact.